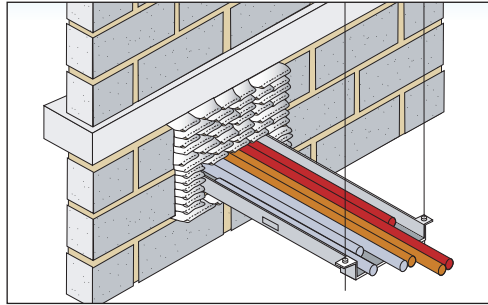




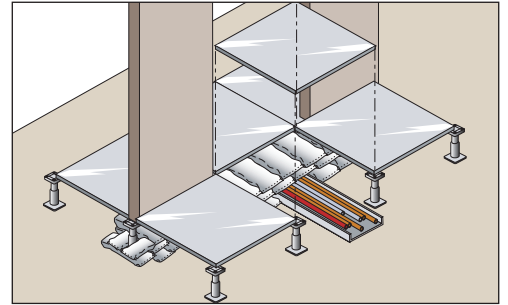
## C300P - Intumescent Pillows

PFC Corofil C300P Intumescent Pillows will provide up to 4 hours' fire protection to metal services and cables passing through compartment floors and walls.

- Simple to install
- Easy to remove and reinstate whilst changing services
- Maintenance free
- Dry System



*PFC Corofil C300P Intumescent Pillows friction fitted between services and firewall*



*PFC Corofil C300P Intumescent Pillows forming cavity barrier underneath raised access floor*

### Description

PFC Corofil C300P Intumescent Pillows are simply packed tightly in between penetrating services and the wall. In a floor, pillows are additionally supported by means of a mesh support system. (See diagram)

Under fire conditions, PFC Corofil C300P Intumescent Pillows expand to form an effective seal around service penetrations.

PFC Corofil C300P Intumescent Pillows are suitable for use with:

- Metal pipework
- Cable trays
- Electrical trunking (inside and outside)



n55Plus

CI/SFB

(59)

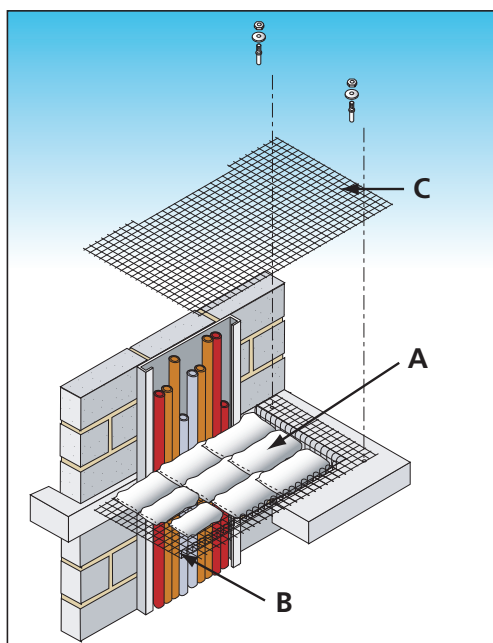
X

August 2005

PFC COROFIL Firestop Products, Davis Road, Chessington, Surrey KT9 1TU

Tel: +44 (0) 208 391 0533 Fax: +44 (0) 208 391 2723 E-mail: sales@pfc-corofil.com

[www.pfc-corofil.com](http://www.pfc-corofil.com)



PFC Corofil C300P Intumescent Pillows supported by mesh cage

### Labels

A = PFC Corofil C300P Intumescent Pillows

B = Basket of galvanised steel wire mesh 50mm x 50mm squares, wire diameter 2.5mm mesh basket mechanically fixed to floor slab

C = Wire mesh as above, overlapping basket mesh and tied together with steel wire

### Estimating Quantities

Pillows are available in four sizes and the table below outlines approximate quantities of each size to fill one m<sup>2</sup> area.

Pillow size (mm)	Approximate number
300 x 200 x 30	165 per m2 opening
300 x 150 x 30	220 per m2 opening
300 x 100 x 30	330 per m2 opening
300 x 50 x 30	660 per m2 opening

### Fire Rating

PFC Corofil C300P Intumescent Pillows will provide 4 hours' fire integrity and 2 hours' insulation rating as tested in accordance with BS476 Part 20.

### Specification

Install PFC Corofil C300P Intumescent Pillows to provide up to 4 hours rating where services pass through fire rated walls and floors. Installation to be fully in accordance with manufacturer's instructions.

### To Order

Contact our technical sales office (Tel: +44 (0) 208 391 0533) with details of hole sizes, penetrating services and quantities.

### Technical Information

For further information relating to the installation and Health & Safety, please refer to the C300P Intumescent Pillows installation instructions.