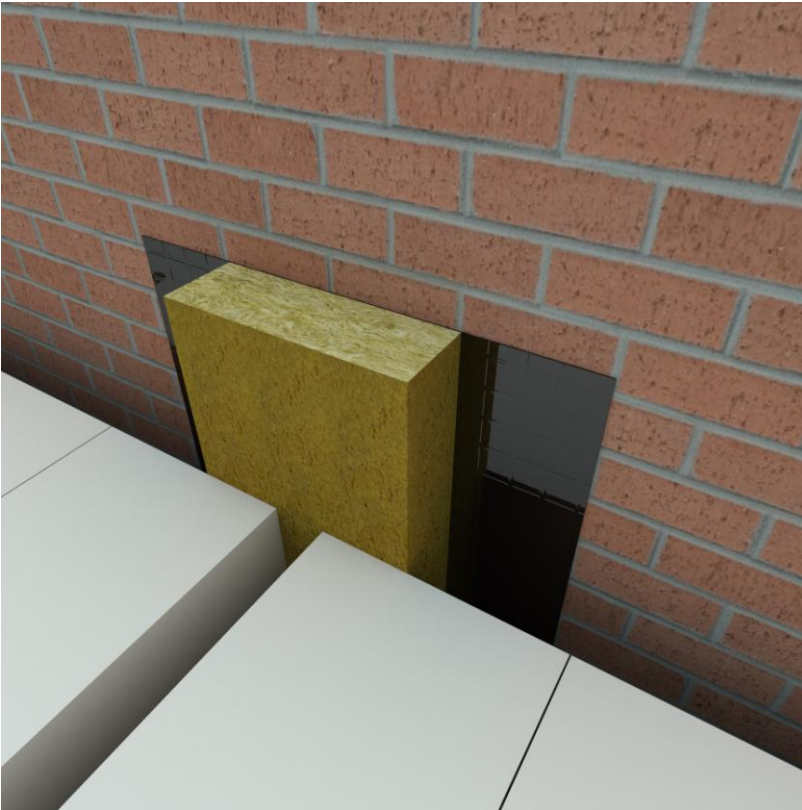




PFC Corofil C450 Party Wall Closer



Application

PFC Corofil C450 Part Wall Closer is a rock mineral fibre cavity barrier with an integral DPC suitable for closing cavities in brick and block party walls vertically up to 150mm wide. It is used to prevent the spread of fire and reduce smoke and sound transmission along a continuous cavity between separate dwellings.

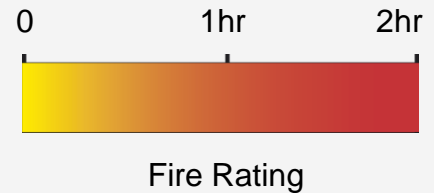
Tested in accordance with BS 476:Part 20:1987, PFC Corofil C450 Party Wall Closer provides up to 2 hours fire protection.

General benefits:

- Friction fit under compression
- Suitable for party walls
- Integral DPC prevents moisture transmission between external and internal leaf at the cavity barrier point
- Maximum cavity size of 150mm

FIRE RATINGS

Tested to BS 476:Part 20:1987



TECHNICAL INFORMATION

Available from our technical sales office.

Email tech@pfc-corofil.com for:

- Safety Data Sheet (SD450PWC)
- Installation Instructions (MS450PWC)





PFC Corofil C450 Party Wall Closer

Description

PFC Corofil C450 Party Wall Closer is manufactured from a high density rock mineral fibre bonded to a polythene DPC. The product is supplied in one metre lengths, manufactured to suit the overall cavity size and cut to suit the width of the party wall (260mm with a 340mm DPC). The DPC layer is oversized in width and length to provide an overlap zone to prevent water ingress.

Specification

Install PFC Corofil C450 Party Wall Closer in brick/block party wall cavities to provide up to 2 hour fire rated seals.

Fire rating when installed in a brick, block wall

| Cavity Size | Orientation | Integrity | Insulation |
|-------------|-------------|-----------|------------|
| Up to 150mm | Vertical | 120 mins | 120 mins |

Please order from our technical sales office.

PFC Corofil
Units 3-4
King George Trading Estate
Davis Road
Chessington
Surrey KT9 1TT

Tel: + 44 (0) 208 391 0533
Fax: + 44 (0) 208 391 2723
Email: sales@pfc-corofil.com
www.pfc-corofil.com