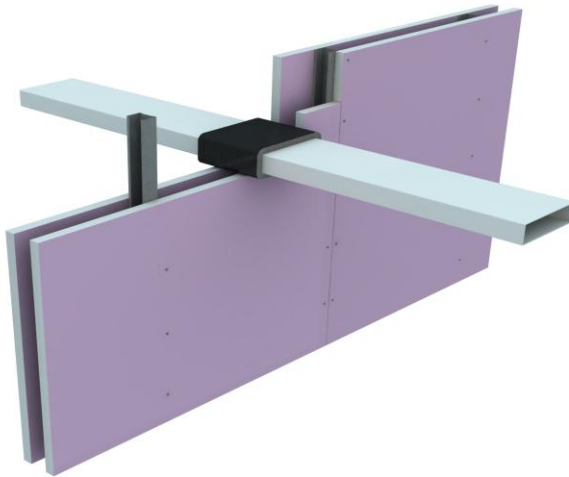


TENMAT Vent Duct Sleeve



Application

TENMAT Vent Duct Sleeves are a closure device installed around plastic vent ducts through non load bearing wall constructions where they have been provided with apertures for the penetration of the services.

General benefits:

- Acoustic rating of up to 49dB
- Suitable for use with walls built from concrete, block, masonry, plasterboard and PFC Corofil Coated panel System

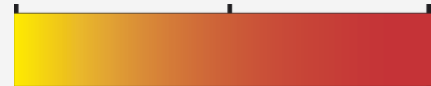
Description

TENMAT Vent Duct Sleeve is a flexible intumescent material, consisting primarily of mineral fibres, intercalated graphite and organic binders formed into a duct sleeve. Grey in colour it has a glass fibre reinforced aluminium foil cladding around the perimeter along its full length. Supplied in various dimensions to suit specific duct sizes it has a nominal 25mm thick wall. It can be cut down along its length to aid fitment and a strip of aluminium foil tape is used to seal the joint.

FIRE RATINGS

Tested to BS476Part 20:1987
EN1366-3:2009

0 2hr 4hr



Fire Rating

In partnership with



TECHNICAL INFORMATION

Available from our technical sales office.

Email tech@pfc-corofil.com for:

- Safety Data Sheet (SDTVDS)
- Installation Instructions (MSTDVS)



TENMAT Vent Duct Sleeve

Specification

Flexible and rigid walls must be a minimum 132mm thick. Flexible walls may be constructed with or without insulation in the cavity.

Fire rating for rectangular vent duct pipes in flexible and rigid wall constructions with a minimum thickness of 132mm

PVC-U Rectangular duct pipe size (mm)	Nominal wall thickness (mm)	Minimum protrusion of sleeve each side of wall (mm)	Integrity/Insulation
110 wide x 54 high	1.5 – 1.7	24	120/120
204 wide x 60 high	1.5 – 1.7	24	120/120
310 wide x 29 high	1.8 – 2.0	24	120/120

Fire rating for rectangular vent duct pipes in rigid wall constructions with a minimum thickness of 150mm

PVC-U Rectangular duct pipe size (mm)	Nominal wall thickness (mm)	Minimum protrusion of sleeve each side of wall (mm)	Integrity/Insulation
204 wide x 60 high	1.5 – 1.7	15	240/240

Acoustic

PFC Corofil Insulated Fire Sleeves have been tested to provide a Weighted Sound Reduction Index (Rw) of up to 49db. The compressible nature of the material used to manufacture the product can reduce the potential of any structural borne pipe noise

TECHNICAL INFORMATION

n55Plus

P12 43

P12 44

P12 370

P12 375

In partnership with



TENMAT Vent Duct Sleeve

Fire rating for rectangular vent duct pipes through PFC Corofil Coated Panel System in flexible and rigid wall constructions with a minimum thickness of 132mm

Single 50mm Panel

PVC-U Rectangular duct pipe size (mm)	Nominal wall thickness (mm)	Minimum protrusion of sleeve each side of wall (mm)	Integrity/insulation
110 wide x 54 high	1.5 – 2.0	40	60/60
204 wide x 60 high	1.5 – 2.0	40	60/60
310 wide x 29 high	1.5 – 2.0	40	60/60

Double 50mm Panel

PVC-U Rectangular duct pipe size (mm)	Nominal wall thickness (mm)	Minimum protrusion of sleeve each side of wall (mm)	Integrity/insulation
110 wide x 54 high	1.5 – 2.0	25	120/120
204 wide x 60 high	1.5 – 1.0	25	120/120
310 wide x 29 high	1.5 – 2.0	25	120/120

In partnership with



Please order from our technical sales office.

PFC Corofil
Units 3-4
King George Trading Estate
Davis Road
Chessington
Surrey KT9 1TT

Tel: + 44 (0) 208 391 0533
Fax: + 44 (0) 208 391 2723
Email: sales@pfc-corofil.com
www.pfc-corofil.com